

# Dashing Away With The Smoothing Iron

Arranged by David C Ayre

**Moderato** (♩. = 88)

Flute

Piano

*f* *mf* *mf* *mf*

**Moderato** (♩. = 88)

Electric Bass

5

Fl.

Pno.

E. Bass

10

Fl.

Pno.

E. Bass

15

Fl.

Pno.

E. Bass

1 - 5

6

*f*

*mf*

22

29

36

*p*

*p*

*p*

*p*

Detailed description: This page contains a musical score for three instruments: Flute (Fl.), Piano (Pno.), and E. Bass. The score is divided into four systems, each starting with a measure number (15, 22, 29, 36). The key signature changes from one sharp (F#) to two flats (Bb, Eb) between the first and second systems. The first system (measures 15-21) includes fingerings '1-5' and '6' for the Flute and dynamic markings 'f' and 'mf' for the Piano. The second system (measures 22-28) continues the piano accompaniment. The third system (measures 29-35) features a more active flute line. The fourth system (measures 36-40) includes piano ('p') dynamics for both the Flute and Piano parts. The E. Bass part provides a steady harmonic foundation throughout.

42

Fl.

Pno.

E. Bass

*mp* *mf* *mp* *mf*

46

Fl.

Pno.

E. Bass

*f* *f* *f* *f*

# Flute **Dashing Away With The Smoothing Iron**

Arranged by David C Ayre

**Moderato** (♩. = 88)



# Piano **Dashing Away With The Smoothing Iron**

Arranged by David C Ayre

**Moderato** (♩ = 88)

The piano score is written for a grand piano in 6/8 time, with a key signature of one sharp (F#). The tempo is marked 'Moderato' with a quarter note equal to 88 beats per minute. The score is divided into six systems, each with a measure number at the beginning. The first system (measures 1-6) starts with a forte (f) dynamic in the bass and a mezzo-forte (mf) dynamic in the treble. The second system (measures 7-10) continues with mf dynamics. The third system (measures 11-14) also features mf dynamics. The fourth system (measures 15-20) begins with mf and ends with a forte (f) dynamic. The fifth system (measures 21-27) starts with f and mf dynamics and continues with mf. The sixth system (measures 28-33) begins with mf and continues with mf dynamics. The score includes various musical notations such as eighth notes, quarter notes, half notes, and rests, as well as dynamic markings (f, mf) and articulation marks.

7

11

15

21

28

34

Measures 34-37 of a piano piece. The key signature has two flats (B-flat and E-flat). The melody in the right hand consists of eighth and quarter notes. The left hand provides a harmonic accompaniment with chords and single notes.

38

Measures 38-41. Measure 38 features a half-note chord in the right hand and a half-note in the left. Measures 39-40 show a piano (*p*) dynamic in both hands with eighth-note patterns. Measure 41 returns to a half-note chord in the right hand and a half-note in the left.

42

Measures 42-45. Measures 42-43 are marked *mp* (mezzo-piano). Measure 44 is marked *mf* (mezzo-forte). Measure 45 features a crescendo leading to a half-note chord in the right hand and a half-note in the left.

46

Measures 46-49. Measures 46-47 are marked *f* (forte). Measure 48 features a half-note chord in the right hand and a half-note in the left. Measure 49 concludes the section with a half-note chord in the right hand and a half-note in the left.

Electric Bass

# Dashing Away With The Smoothing Iron

Arranged by David C Ayre

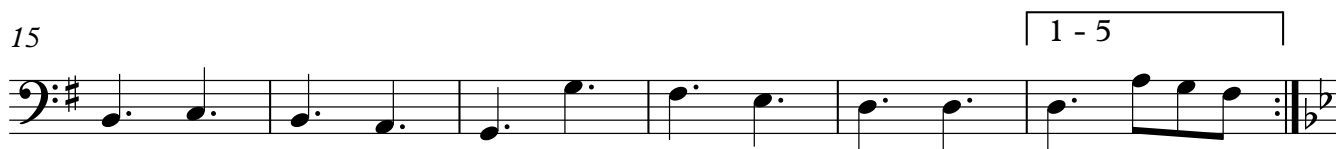
Moderato (♩. = 88)



7



15



21



29



35



42

